

# VNK1 GEAR PUMP GROUP 1

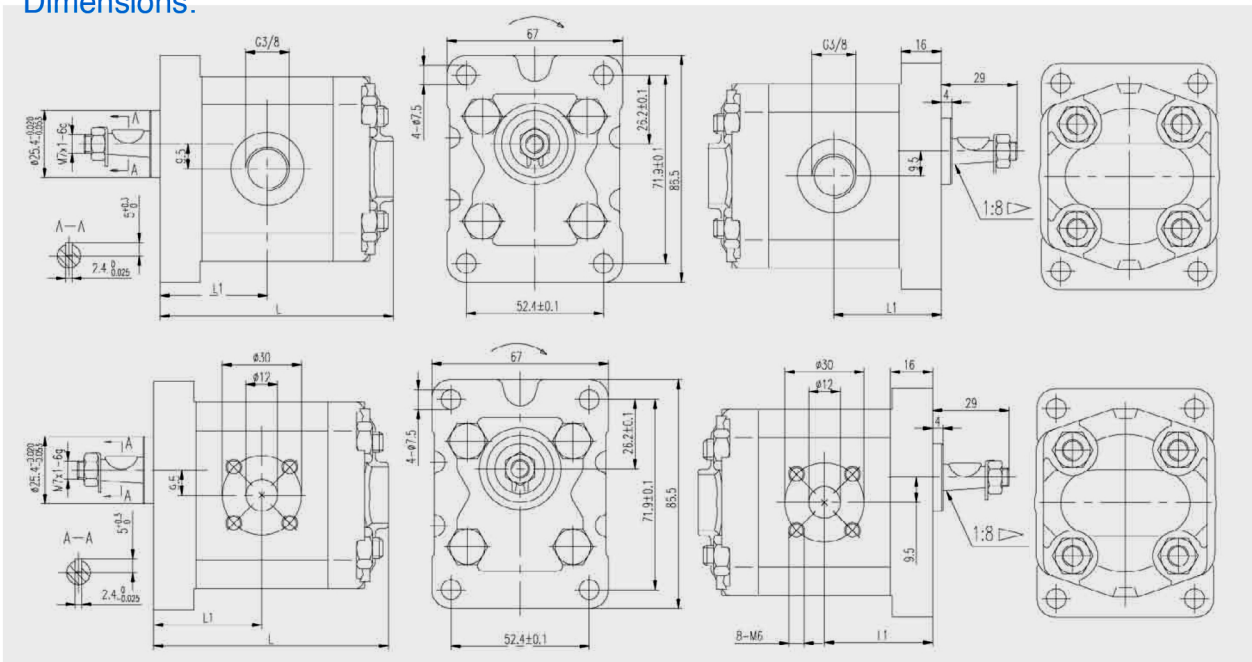
European flange



Type	Displacement c.c.	Pressure Mpa		Speed			L (mm)	L1 (mm)
		Rated	Peak	Rated	Max.	Min.		
VNK-1-0.8-*-*-*C	0.8	25	28	2000	3500	600	74	32,5
VNK-1-1.1-*-*-*C	1.1	25	28	2000	3500	600	75	33
VNK-1-1.3-*-*-*C	1.3	25	28	2000	3500	600	76	34
VNK-1-1.6-*-*-*C	1.6	25	28	2000	3500	600	78	35
VNK-1-1.8-*-*-*C	1.8	25	28	2000	3500	600	78,5	35.5
VNK-1-2.1-*-*-*C	2.1	25	28	2000	3500	600	79	36
VNK-1-2.7-*-*-*C	2.7	25	28	2000	3500	600	81	37
VNK-1-3.2-*-*-*C	3.2	25	28	2000	3500	600	83	38
VNK-1-3.7-*-*-*C	3.7	25	28	2000	3500	600	85	39
VNK-1-4.2-*-*-*C	4.2	25	28	2000	3500	600	85	40
VNK-1-4.8-*-*-*C	4.8	23	25	2000	3500	600	87	41
VNK-1-5.8-*-*-*C	5.8	23	25	2000	3500	600	89	43
VNK-1-8.0-*-*-*C	8	21	23	2000	3500	600	93	47
VNK-1-9.2-*-*-*C	9,2	18	20	2000	3500	600	101	49

Rotation: A Left C Right

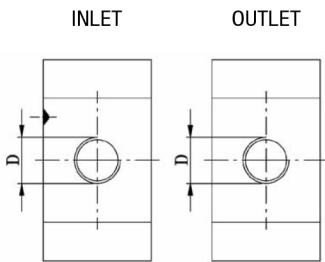
## Dimensions:



Flange type 1

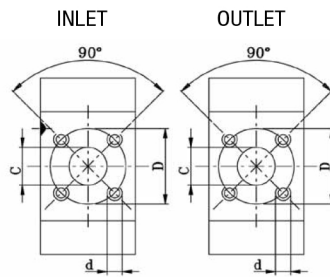
PORTS INLET/OUTLET

Shape G



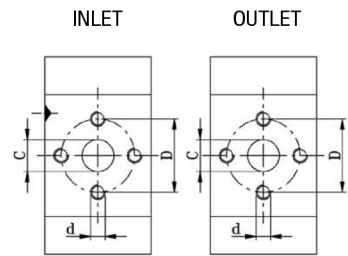
Type	threads
38	G3/8

Shape C



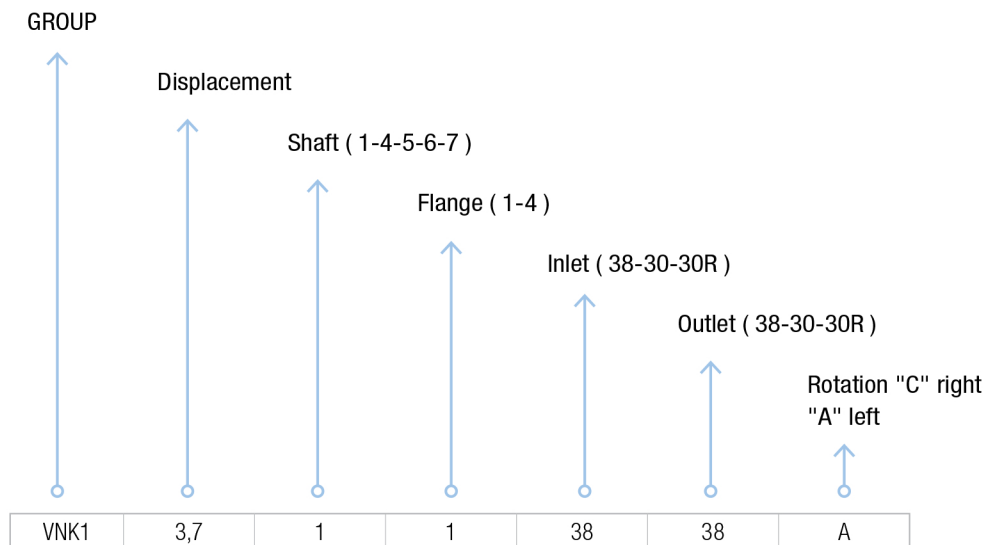
Type	Flange
30	Ø30 M6

Shape R



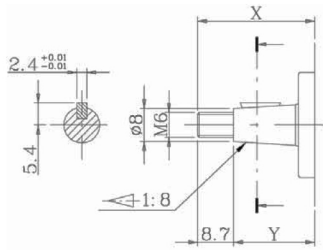
Type	Flange
30R	Ø30 M6

Ordering code



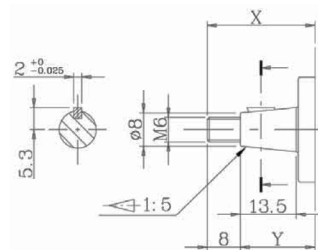
Shaft

Type 1



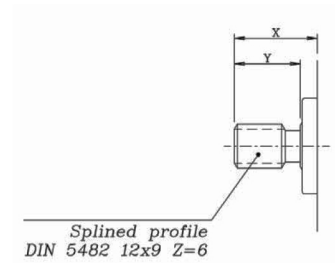
Flange type	X	Y
European	29	20

Type 4



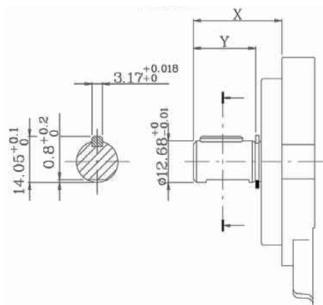
Flange type	X	Y
European	26	18

Type 5



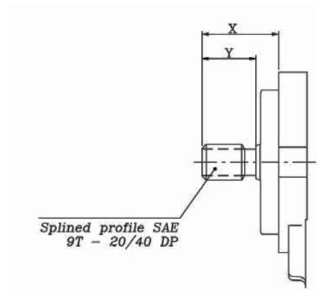
Flange type	X	Y
European	24	16

Type 6



Flange type	X	Y
SAE A	27	19

Type 7



Flange type	X	Y
SAE A	27	19